

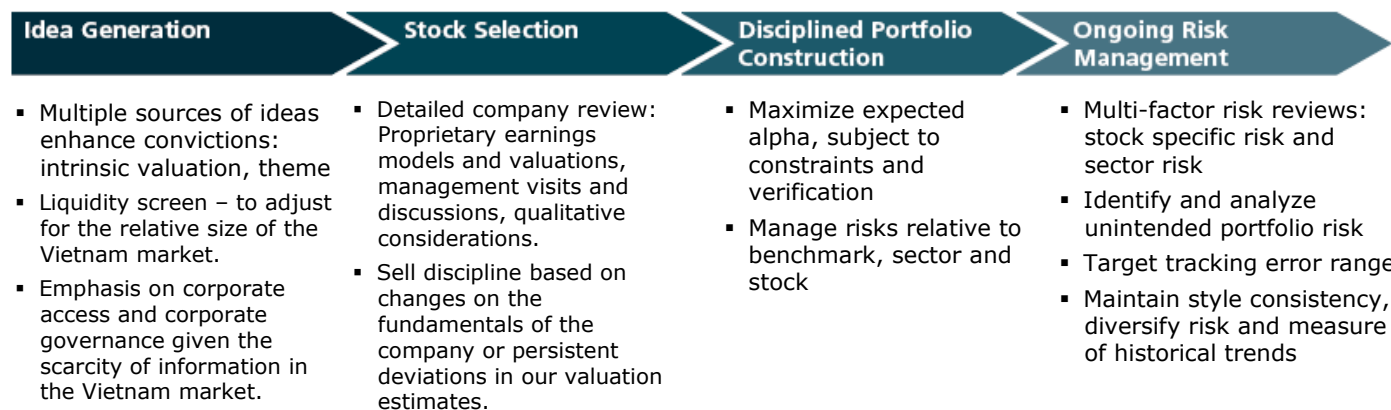
Manulife Progressive Fund (MAFPF1)

Investment Philosophy

We believe that companies that are trading inexpensively, relative to their earnings potential and that have a clear catalyst for future growth, will outperform.

Style:	Core
Inception Date:	October 2007
AUM:	~US\$8 million
Benchmark:	VN-Index
Number of Holdings	15-35
Expected Tracking Error:	2%-9%

Investment Process

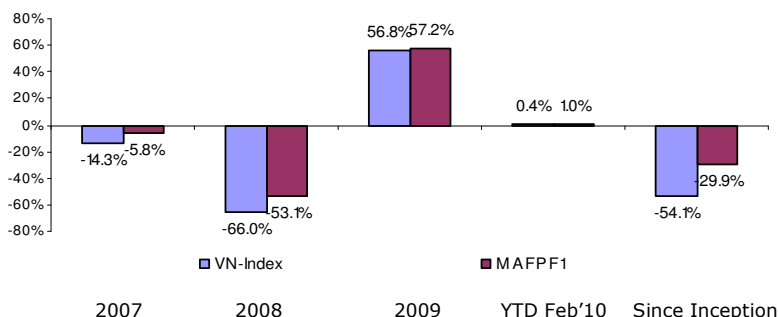


Strategy Features

- Disciplined approach to stock selection
- Proprietary 'on-the-ground' research identifies opportunities & risks
- Risk management and portfolio construction control that adds alpha while reducing risk over the long term

Investment Performance

Calendar Year Returns (ending December 31)



Annualized Returns

	2007	2008	2009	YTD	Since Inception
VN-Index	-14.29%	-65.95%	56.76%	0.43%	-55.06%
MAFPF1	-5.81%	-53.14%	57.16%	1.01%	-29.93%
Value added	8.48%	12.82%	0.40%	0.58%	24.13%

Note: MAFPFF1 was launched on 5 Oct 2007
 (Sources: MVFM, HOSE)

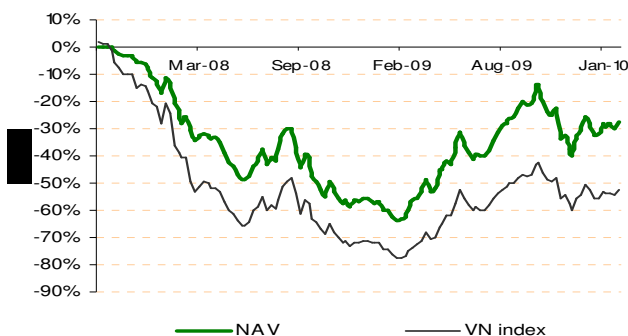
Manulife Vietnam Fund Management Company

Manulife Vietnam Fund Management Company Limited (MVFM) is an affiliate to the MFC Global Investment Management (MFC GIM). Our value and expertise that we provide our clients are based on the integration of three elements that form the foundation of our investment management process: Culture of managing risk, teams of talented investment managers and organizational strength.

MVFM was licensed by the Ho Chi Minh City Planning and Investment Department under Business Registration Certificate No. 4104000117 on June 10, 2005 and received the Fund Management License No. 04/UBCK-GPHDQLQ from the State Securities Commission (SSC) of Vietnam on June 14, 2005; Amendment License No. 06/UBCK-GPHDQLQ dated 11 October 2007 and Decision No. 413/QĐ-UBCK dated 12 July 2007 by the SSC. MVFM is an independently managed fund management company, which reports to the SSC.

MVFM is fully staffed by licensed investment professionals and provides a full range of products and services commensurate with a top tier fund management company. Assets under Management as of December 31, 2009 amounted to US\$281 million equivalent. Additional information about Manulife Vietnam Fund Management Company Limited may be found at www.manulifefunds.com.vn

NAV Performance Since Inception



(Sources: MVFM, HOSE. Data as at 8 March, 2010)

Portfolio Characteristics

	MAFPF1	VN-Index
Price/Earnings	16.84	26.70
Price/Book	4.62	4.46
Return on Equity	26.93	23.21
Earnings Per Share Growth	44.5	-
Dividend Yield	3.52	3.22
Number of Holdings (*)	35	213

(Sources: MFC GIM, as of 31 October, 2009)

(*) as of 31 January, 2009

Portfolio Risk Parameters

Universe	VN-Index
Stock Weights	+/- 10%
Sector Weights	+/- 10%
Cash Weight	0-10%

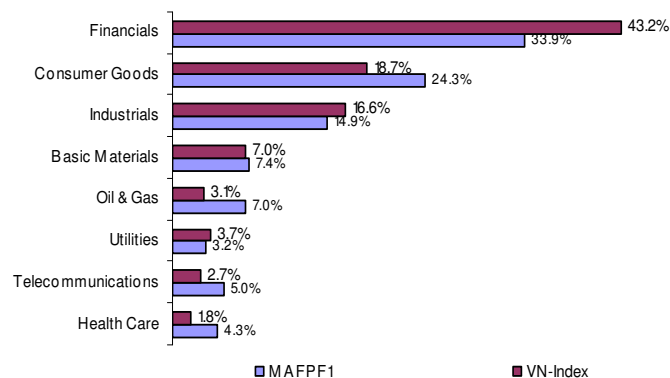
(Source: MFC GIM)

Portfolio Manager

Mark Cañizares

Investment Director, Head of Equities

Sector Allocation



(Sources: MVFM, Bloomberg. Data as at 28 February, 2010)

Top Five Holdings

	MAFPF1	VN-Index
Vietnam Dairy Products JS Company (VNM)	10.01%	6.99%
BaoViet Holdings (BVH)	7.32%	6.11%
HAGL JSC (HAG)	6.32%	5.01%
PetroVietnam Drilling & Well services (PVD)	5.31%	2.81%
Saigon Securities Incorporation (SSI)	5.25%	3.07%
TOTAL	34.21%	

(Sources: MVFM, Bloomberg. Data as at 28 February, 2010)

Risk Characteristics

	MAFPF1
Tracking error	7.77
Beta	1.00

(Source: MFC GIM, as of January, 2010)

For sales & media inquiries, please contact:

Dang Vi Thanh

Sr. Assistant Manager, Sales & Marketing

Tel: (84) – 8 5416 6777 Email: thanh_dang@manulife.com

Sebastian Subba

Chief Investment Officer

MFC Global Investment Management®

MFC Global Investment Management ('MFC GIM') is the asset management division of Manulife Financial. MFC GIM's diversified group of companies and affiliates provide comprehensive asset management solutions for institutional investors in key markets around the world. This investment expertise extends across a full range of asset classes including equity, fixed income and alternative assets, with investment offices in the U.S., Canada, the UK, Japan, Hong Kong, and throughout Asia.

Disclaimer

The views expressed are those of Manulife Vietnam Fund Management Company Limited as of February 2010, and are subject to change based on market and other conditions. Information about a portfolio's holdings, asset allocation is historical and is no indication of future portfolio composition, which will vary. All overviews and commentary are intended to be general in nature and for current interest. Clients should seek professional advice for their particular situation. Past performance does not guarantee future results. This material was prepared solely for informational purposes and does not constitute an offer or an invitation by or on behalf of MVFM to any person to buy or sell any security.